

CGS THREE LUG MOUNT MANUAL

The CGS Group Three Lug Mount is designed for use with HK type three lug adapters. It features an encapsulated assembly and an exterior 1" hex feature. This feature allows the user to get a wrench on the three lug mount for installation and removal from the silencer, as well as to use the mount as a tool for your three lug adapter if required. The CGS three lug mount has a unique machining operation done to the lug seats which ensure that all the lug seating surfaces are on the exact same plane, something you won't find on any other three lug mounts. An issue with traditional three lug mounts is that on occasion the end mill will slip into or out of its collet and cut the lug seat either too deep or too shallow creating an uneven seating plane for the three lug adapter to shoulder on, leading to a lack of perpendicularity to the bore which can lead to baffle and endcap strikes. Our three lug mount machining process ensures the lugs are all on the same plane and this allows the mount to be perfectly perpendicular to the bore.

Before using this product, please take a moment to read and understand this manual. If you have any questions, please feel free to call us at any time!



PRODUCT FEATURES

- The housing, piston, and cap are machined out of 100% 17-4 Stainless Steel.
- The spring is 17-7 stainless steel.
- Features a 1" hex wrench feature.
- Capable of being used as a wrench for the three lug adapter.
- The encapsulated assembly is easy to install, remove, and disassemble for cleaning.
- O-rings are used to seal both the piston and housing as well as the housing and cap.

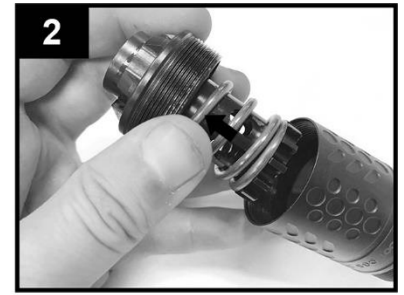
PRODUCT SPECIFICATIONS

- Caliber – 9mm
- Length – 1.65"
- Diameter – 1.3"
- Weight – 3oz

MATERIAL SPECIFICATIONS

- Finish –Black Nitrided Stainless Steel

Prior to use, ensure all threaded junctions are properly shouldered against their corresponding surfaces and tightly secured. Ensure that the shaft of the piston as well as the O-rings in the cap and piston are lubricated for proper operation.



INSTALLATION ONTO SILENCER

1. Unscrew the rear cap from the piston housing (**Image 1**)
2. Pull the piston, piston spring, and rear cap out of the piston housing. (**Image 2**)
3. Screw the three lug mount into the piston housing.

NOTE:

Never force components together. If you encounter cross threading or binding, stop the installation process and contact **CGS**.

Use of the suppressor if not properly mounted will cause damage to the suppressor and firearm and could cause injury to the shooter.

Never rest the silencer on an object while firing. For example, never rest the silencer on a barricade or any object while firing. Resting the silencer on an object while firing can cause the silencer to not be square with the lug seats and can result in a baffle and/or end cap strike.

INSTALLATION ONTO HOST FIREARM

CAUTION! Do not attempt to install/remove the suppressor if it is hot.

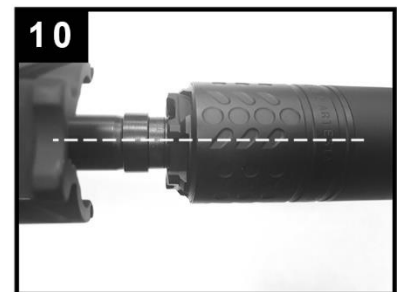
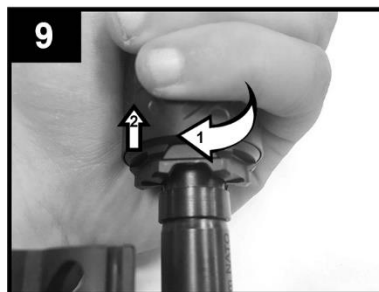
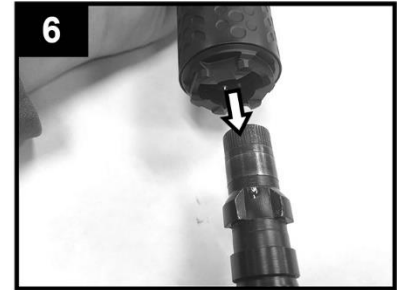
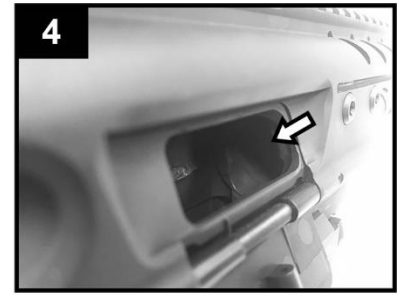
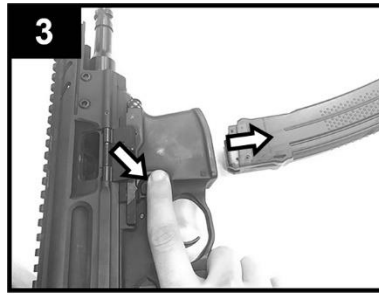
1. Check to make sure the firearm is safe and unloaded. **(Images 3-4)**
2. Check the male three lug adapter, already attached to the host firearm barrel, to ensure the male three lug adapter is clean and free of debris. **(Image 5)**
3. Align the silencer three lug mount with the male three lug adapter and slide the silencer assembly over the male three lug adapter while lining up the lug slots with the lugs. **(Images 6-7)**
4. Compress the silencer against the lugs, you'll now feel spring pressure from the internal three lug piston spring. **(Image 8)**
5. While the silencer assembly is fully compressed, rotate the silencer assembly clockwise 60 degrees and release the silencer. When the silencer is released, attempt to rotate it left and right. The silencer assembly should not be able to rotate more than a few degrees at this point, as it is now in its locked position. **(Image 9)**
6. Visually inspect that the suppressor is mounted straight to the centerline of the bore. Ensure that it is not tilted or canted in any way, and that it is fully shouldered and secure on the barrel. **(Images 10-11)**

NOTE:

If the suppressor appears to be misaligned, stop the installation process and contact CGS.

Use of the suppressor if not properly mounted will cause damage to the suppressor and firearm and could cause injury to the shooter.

7.



REMOVAL FROM HOST FIREARM

1. Check to make sure the firearm is safe and unloaded. **(Images 3-4)**
2. Reverse the steps shown in the Installation onto Host Firearm section.
3. With the muzzle pointed in a safe direction push the silencer assembly against the male three lug adapter.
4. While compressed, rotate the silencer assembly counterclockwise and then release pressure.
5. Pull to remove silencer assembly from male three lug adapter.

DISASSEMBLY

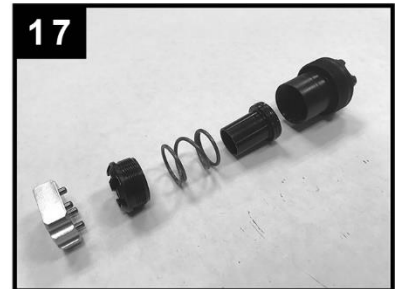
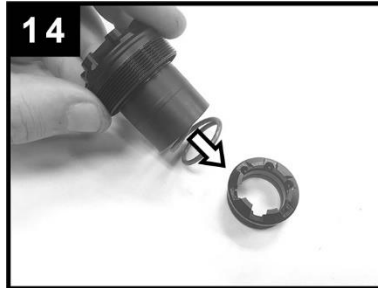
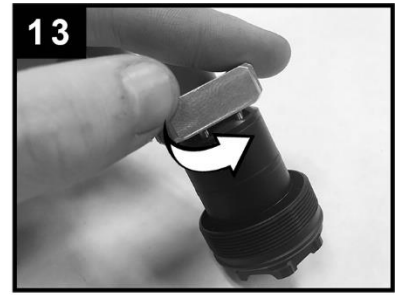
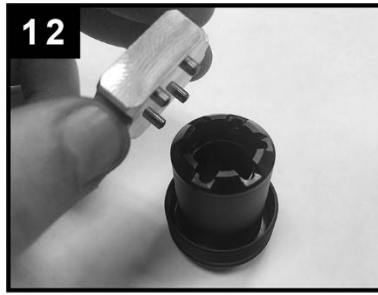
1. With the suppressor removed from the firearm and using the included tool, unscrew the three lug cap and remove it from the three lug housing. (Images 12-14)
2. Remove the three lug piston and spring from the three lug housing. The three lug piston is held in tightly by an O-ring and it may be necessary to push on it with one finger from the lug side while pulling it out from the other side. (Images 14-17)

The three lug mount is now completely disassembled and ready for cleaning.

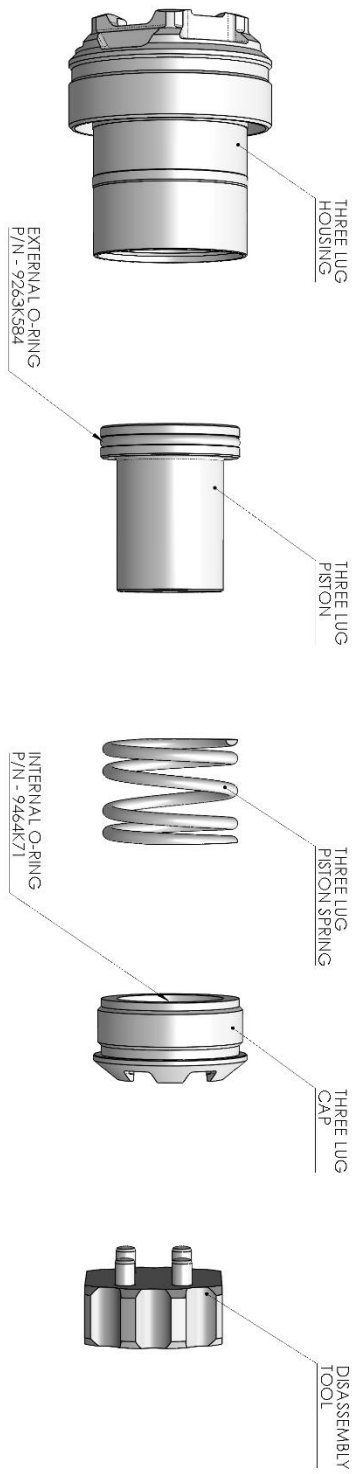
NOTE:

Prior to cleaning the three lug cap or the three lug piston by chemical means or by using a soda blaster, remove the O-rings from the grooves in the inner diameter of the cap and outer diameter of the piston by using a dental pick and install and lubricate a new O-ring after cleaning is complete. O-rings are recommended to be replaced each time the suppressor is cleaned, or when otherwise worn.

O-ring part numbers are shown on the parts diagram.



THREE LUG MOUNT PARTS DIAGRAM



MAINTENANCE

1. It is recommended that the three lug mount be disassembled and cleaned at intervals of 1000-2000 rounds depending on the ammunition being used.
2. With the suppressor removed from the firearm and completely disassembled, clean each component with a hydrocarbon based solvent and nylon brush and wipe dry. For easier cleaning, a soda blaster is highly recommended.
3. If you have trouble removing any part of the suppressor, soak the part in solvent to release the carbon build up.
4. Do not use a bore patch or jag to clean the three lug mount
5. After cleaning a light coat of oil should be applied the components and O Rings before reassembly.

WARNINGS AND DISCLAIMERS

- Always practice the basic rules of firearms safety when using the suppressor.
- Silencers may loosen during firing. It is important that you frequently verify that your suppressor is securely tightened during use. It is recommended that you check for tightness every 30 rounds and use gloves or another barrier to ensure you are not burned. This is much less likely to occur with the use of a three lug mount.
- **CGS** is not responsible or liable for damages or injuries resulting from the improper use of this product; it is the user's responsibility to read and completely understand the instructions in this manual before using this product.

AMMUNITION RECOMMENDATIONS

- The three lug mount was designed for firing of SAMMI 9mm Luger ammunition only. Contact **CGS** regarding other types of ammunition.
- We recommend the use of high quality factory loaded ammunition with this product for best sound performance, accuracy, and reliability.
- Suppressors are designed to attenuate the muzzle blast of a firearm, but they do not alter or suppress the sonic crack caused by supersonic projectiles as they break the sound barrier. For best sound suppression we recommend the use of subsonic ammunition. For 9mm this is commonly 147gr, 158gr, and 165gr.

WARRANTY

Subject to restrictions, CGS warrants this suppressor to be free from any manufacturing defects for life. In the unlikely event that you received a defective product, **CGS** will repair or replace the suppressor; it is at the discretion of CGS to determine if a particular defect or condition is covered by this warranty.

If a repair is necessary, please contact CGS **by email** for a CGS representative to make arrangements for the proper and legal return of the product.

Please do not ship anything to CGS without first contacting CGS.

CGS Group, LLC

Customer Service

Sales@CGSGroup.com

© 2019 CGS Group LLC. All rights reserved.